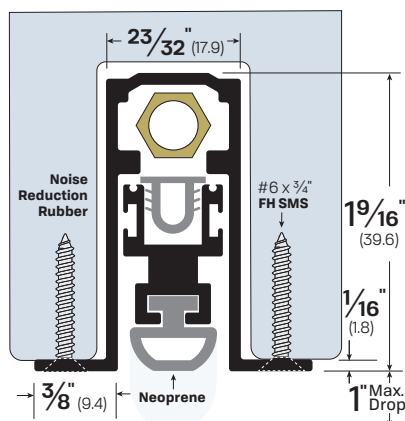


#7053



Mortised

FINISHES: CA

AVAILABLE SIZES: Can be manufactured to any length from 12" to 144"

OPTIONS:

AIR - Air Flow

EA - Electrical Actuator

LL - Lead Lined

LS - Light Spring

PULL - Pull Out

PV - Pivot Doors

SF - Security Fasteners

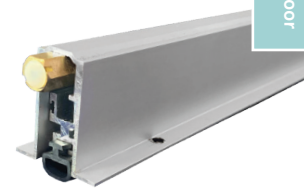
SL - Sliding Doors

TD - Top Door Installation

NOTES:

- Adjusting the brass nut changes pressure on concealed internal spring to satisfy field conditions.
- Self-leveling door seal up to maximum 1" drop.
- Replacement neoprene - Part #4053N or optional Part #4441N
- Unit supplied with 1 pair of end caps - Part #4063EC-CA or #4063EC-MB

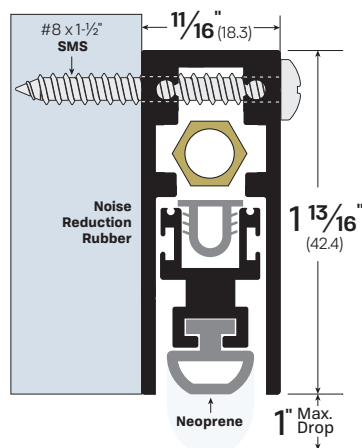
LEGACY	NGP	PEMKO	ZERO
7053	225N	434APKL	350AA



#7053CA



#7153



Surface-Mounted

FINISHES: CA, BK, WP

AVAILABLE SIZES: Can be manufactured to any length from 12" to 144"

OPTIONS:

AIR - Air Flow

EA - Electrical Actuator

FL - Fire Label

LL - Lead Lined

LS - Light Spring

PULL - Pull Out

PV - Pivot Doors

SF - Security Fasteners

SL - Sliding Doors

NOTES:

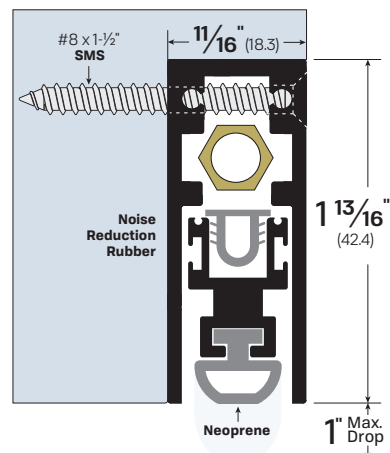
- Adjusting the brass nut changes pressure on concealed internal spring to satisfy field conditions.
- Self-leveling door seal up to maximum 1" drop.
- Replacement neoprene - Part #4053N or optional Part #4441N
- Unit supplied with 1 pair of end caps - Part #4153EC-CA or #4153EC-MB

LEGACY	NGP	PEMKO	ZERO
7153	222N	4131ASL	351AA



#7153CA

#7253



Semi-Mortised

FINISHES: CA, BK, WP

AVAILABLE SIZES: Can be manufactured to any length from 12" to 144"

OPTIONS:

AIR - Air Flow

FL - Fire Label

LL - Lead Lined

LS - Light Spring

SF - Security Fasteners

PULL - Pull Out

PV - Pivot Doors

EA - Electrical Actuator

SL - Sliding Doors

TD - Top Door Installation

NOTES:

- Adjusting the brass nut changes pressure on concealed internal spring to satisfy field conditions.
- Self-leveling door seal up to maximum 1" drop.
- Replacement neoprene - Part #4053N or optional Part #4441N
- Unit supplied with 1 pair of end caps - Part #4153EC-CA or #4153EC-MB

LEGACY	NGP	PEMKO	ZERO
7253	222N	4131ASL	352AA



#7253CA