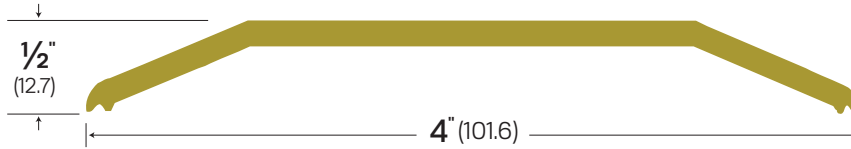
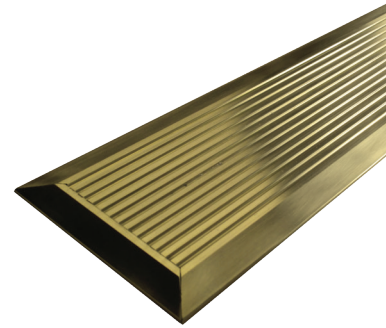
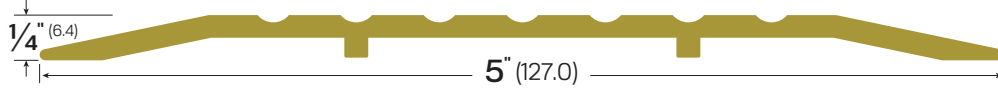


**#813-BR**  
**#913-MA**



**#3545BR**

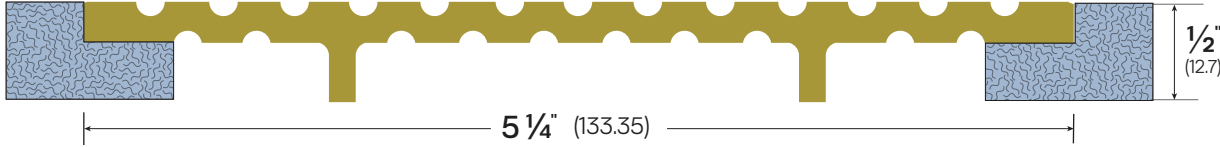


#30756BR

**#813G-BR**



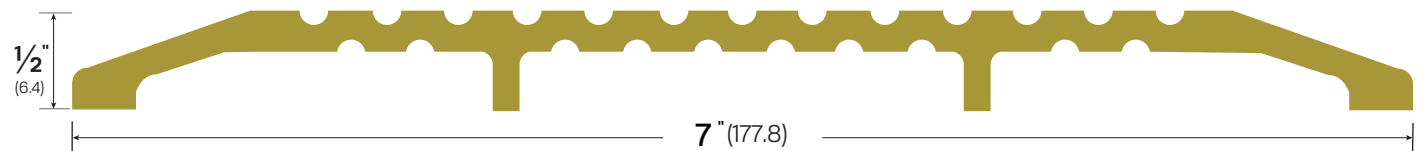
**#3514BR**



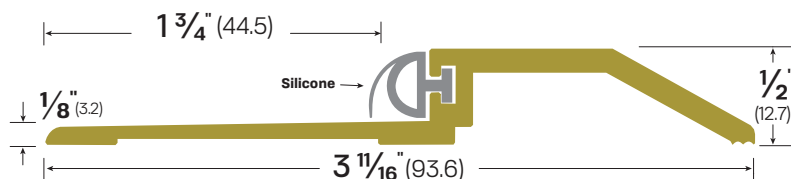
**#3656BR**



**#30756BR**

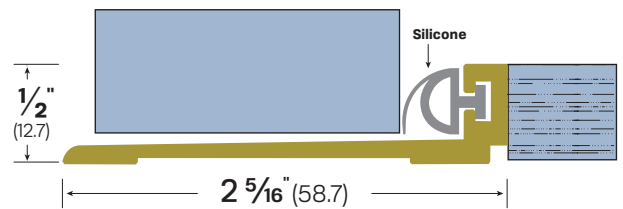


**#3465BR**

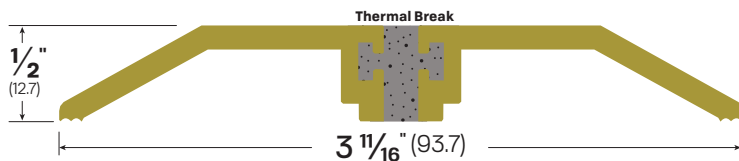


**OPTIONS:** EMI/RFI - Electromagnetic/Radio Frequency Interference

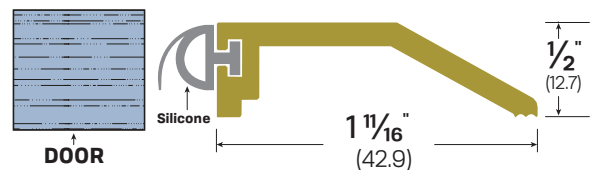
**#3762BR**



**#3512BR**



**#3292BR**



LEGACY	3545BR	3656BR	3514BR	30756BR	3465BR	3762BR	3512BR	3292BR
NGP	513BR	426B	-	427BR	-	-	-	-
PEMCO	271B	172B	-	176B	-	-	-	-
ZERO	545B	656B	-	657B	564B	-	-	-

**FINISHES:** MA, BR  
**OPTIONS:** ACF, EPX, LA, PEPX, RUB  
**NOTES:**  
Flathead brass-plated screws - #10 x 1-1/2"

Thresholds  
Saddles