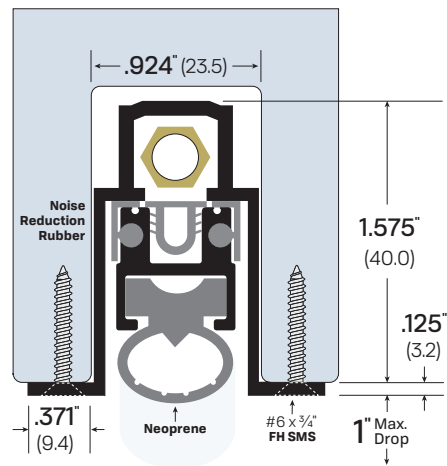


## #7463



### Mortised

**FINISHES:** CA

**AVAILABLE SIZES:** Can be manufactured to any length from 12\" to 144\"

#### OPTIONS:

**BRW** - Brillow  
**EA** - Electrical Actuator  
**FL** - Fire Label

**FX** - Intumescent  
**LS** - Light Spring  
**PULL** - Pull Out

**PV** - Pivot Doors  
**SF** - Security Fasteners  
**SL** - Sliding Doors  
**TD** - Top Door Installation

#### NOTES:

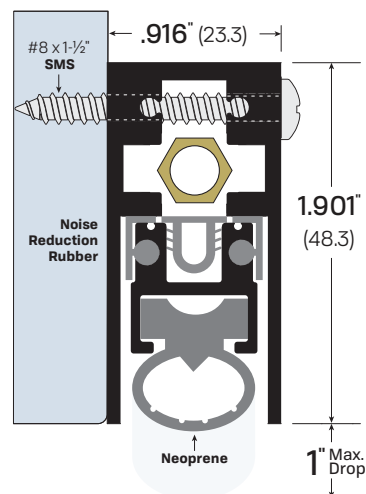
- Adjusting the brass nut changes pressure on concealed internal spring to satisfy field conditions.
- Self-leveling door seal up to maximum 1\" drop.
- Replacement closed cell sponge neoprene - Part #4563N
- Unit supplied with 1 pair of end caps - Part #4063EC-CA or #4063EC-MB

LEGACY	NGP	PEMKO	ZERO
<b>7463</b>	522N	434APKL	364AA



#7463CA

## #7563



### Surface-Mounted

**FINISHES:** CA, BK, DB, GD, WP

**AVAILABLE SIZES:** Can be manufactured to any length from 12\" to 144\"

#### OPTIONS:

**BRW** - Brillow  
**EA** - Electrical Actuator  
**EMI/RFI** - Electromagnetic/Radio

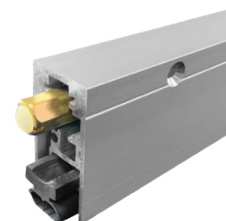
Frequency Interference  
**FL** - Fire Label  
**FX** - Intumescent  
**LS** - Light Spring

**PULL** - Pull Out  
**PV** - Pivot Doors  
**SF** - Security Fasteners  
**SL** - Sliding Doors

#### NOTES:

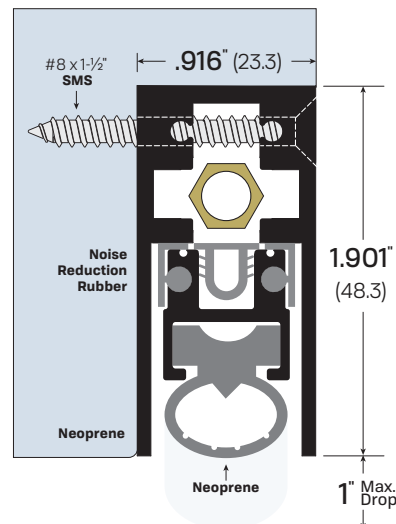
- Adjusting the brass nut changes pressure on concealed internal spring to satisfy field conditions.
- Self-leveling door seal up to maximum 1\" drop.
- Replacement neoprene - Part #4563N
- Unit supplied with 1 pair of end caps - Part #4163EC-CA or #4163EC-MB

LEGACY	NGP	PEMKO	ZERO
<b>7563</b>	520N	4301APKL	365AA



#7563CA

## #7663



### Semi-Mortised

**FINISHES:** CA, BK, DB, GD, WP

**AVAILABLE SIZES:** Can be manufactured to any length from 12\" to 144\"

#### OPTIONS:

**BRW** - Brillow  
**EA** - Electrical Actuator  
**EMI/RFI** - Electromagnetic/Radio

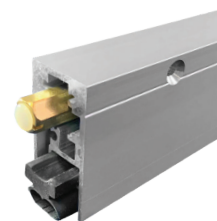
**FL** - Fire Label  
**FX** - Intumescent  
**LS** - Light Spring  
**PULL** - Pull Out  
**PV** - Pivot Doors

**SF** - Security Fasteners  
**SL** - Sliding Doors  
**TD** - Top Door Installation

#### NOTES:

- Adjusting the brass nut changes pressure on concealed internal spring to satisfy field conditions.
- Self-leveling door seal up to maximum 1\" drop.
- Replacement neoprene - Part #4563N
- Unit supplied with 1 pair of end caps - Part #4163EC-CA or #4163EC-MB

LEGACY	NGP	PEMKO	ZERO
<b>7663</b>	520NHM	4301APKL	366AA



#7663CA