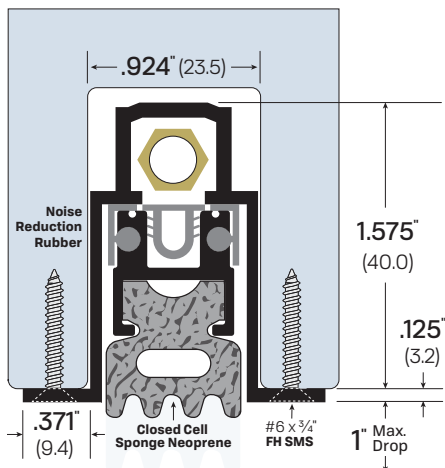


#7063



Mortised

FINISHES: CA

AVAILABLE SIZES: Can be manufactured to any length from 12\" to 144\"

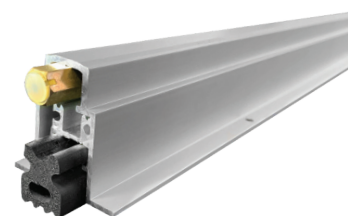
OPTIONS:

EA - Electrical Actuator **PULL** - Pull Out **SL** - Sliding Doors
FL - Fire Label **PV** - Pivot Doors **TD** - Top Door Installation
LS - Light Spring **SF** - Security Fasteners

NOTES:

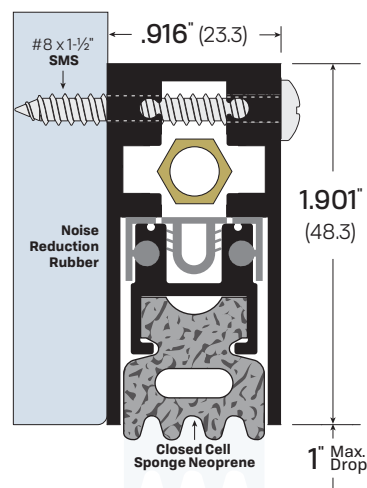
- Adjusting the brass nut changes pressure on concealed internal spring to satisfy field conditions.
- Self-leveling door seal up to maximum 1\" drop.
- Replacement closed cell sponge neoprene - Part #4363SPR
- Unit supplied with 1 pair of end caps - Part #4063EC-CA or #4063EC-MB

LEGACY	NGP	PEMKO	ZERO
7063	423N	434ARL	360AA



#7063CA

#7163



Surface-Mounted

FINISHES: CA, BK, DB, GD, WP

AVAILABLE SIZES: Can be manufactured to any length from 12\" to 144\"

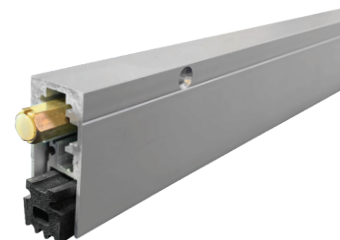
OPTIONS:

EA - Electrical Actuator **PV** - Pivot Doors **SL** - Sliding Doors
FL - Fire Label
LS - Light Spring **SF** - Security Fasteners

NOTES:

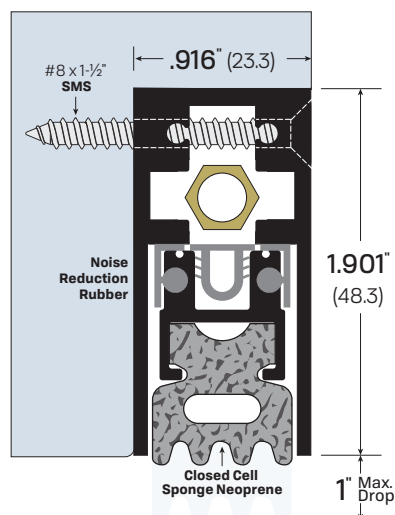
- Adjusting the brass nut changes pressure on concealed internal spring to satisfy field conditions.
- Self-leveling door seal up to maximum 1\" drop.
- Replacement closed cell sponge neoprene - Part #4363SPR
- Unit supplied with 1 pair of end caps - Part #4163EC-CA or #4163EC-MB

LEGACY	NGP	PEMKO	ZERO
7163	420N	430ARL	361AA



#7163CA

#7263



Semi-Mortised

FINISHES: CA, BK, DB, GD, WP

AVAILABLE SIZES: Can be manufactured to any length from 12\" to 144\"

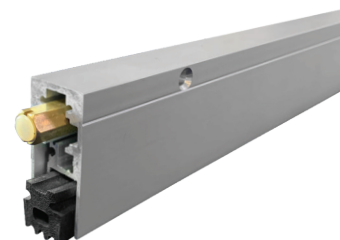
OPTIONS:

EA - Electrical Actuator **PULL** - Pull Out **SL** - Sliding Doors
FL - Fire Label **PV** - Pivot Doors **TD** - Top Door Installation
LS - Light Spring **SF** - Security Fasteners

NOTES:

- Adjusting the brass nut changes pressure on concealed internal spring to satisfy field conditions.
- Self-leveling door seal up to maximum 1\" drop.
- Replacement closed cell sponge neoprene - Part #4363SPR
- Unit supplied with 1 pair of end caps - Part #4163EC-CA or #4163EC-MB

LEGACY	NGP	PEMKO	ZERO
7263	420NHM	430ARL	362AA



#7263CA