

# How To Order: Automatic Door Bottoms

Example #7463CA-FX-36

## Easy Ways To Order

### Email

Orders@LegacyLLC.com

### Phone

Local: +1 (718) 292-5333  
Toll Free: +1 (888) 383-3330

## PART NUMBER & FINISH - OPTIONS - LENGTH (IN)

**7463**

**CA**

**FX**

**36**

### PART NUMBER

7023	7563	<b>End Caps</b>
7053	7593	749EC
7063	7663	4023EC
7093	7763	4063EC
7123	7793	4123EC
7153	7863	4153EC
7163	7963	4163EC
7253	71553	
7263	72553	<b>Misc.</b>
7323		2INCHNUT
7463		545DP
7553		

### FINISH

Finishes vary by product. Please check available finishes listed for each product.

- CA** - Clear Anodized
- MA** - Mill Aluminum
- BK** - Black Anodized Aluminum
- DB** - Dark Bronze Anodized Aluminum
- GD** - Gold Anodized Aluminum
- WP** - White Powder Coat

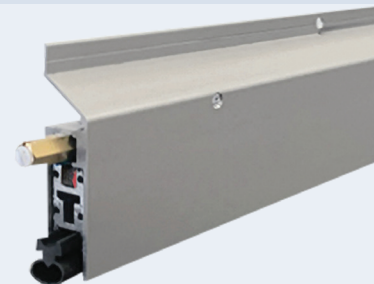
### OPTIONS

Options vary by product. Please check available options listed for each product.

- |   |                                 |                                   |
|---|---------------------------------|-----------------------------------|
| <b>Blank</b> - No Option  | <b>FL</b> - Fire Label          | <b>PULL</b> - Pull Out Out        |
| <b>AIR</b> - Air Flow   | <b>FX</b> - Intumescent         | <b>PV</b> - Pivot Doors           |
| <b>EA</b> - Electrical Actuator                                 | <b>LIG</b> - Ligature Resistant | <b>SF</b> - Security Fasteners    |
| <b>EMI/RFI</b> - Electromagnetic / Radio Frequency Interference | <b>LL</b> - Lead Lined          | <b>SL</b> - Sliding Doors         |
| <b>EP</b> - Extended Plunger                                    | <b>LS</b> - Light Spring        | <b>TD</b> - Top Door Installation |

### LENGTH

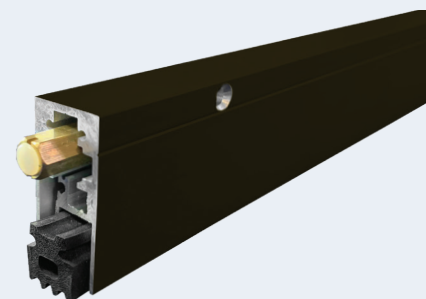
**AVAILABLE SIZES** - Can be manufactured to any length from 12" to 144". Please specify to nearest 1/16"



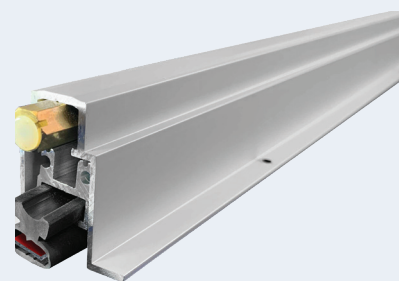
#7593CA-FX



#7763CA



#7163DB



#7463CA-FX



#7553MA