

Legacy Manufacturing is a young, resourceful company solidly rooted in almost 100 years of experience, innovation and advanced technology dedicated to providing superior sealing systems for architectural openings. Our engineered parts and systems offer proven solutions to the wide range of security and life safety challenges the building team faces to ensure reliable performance in those openings. And we offer an unequaled range of product features and options for maximum specification flexibility.

On-site manufacturing and proprietary processes enable us to provide best-in-industry turnaround on parts orders. Hands-on manufacturing control also allows us to ensure consistent, unsurpassed quality in our products. We produce all rubber for our products at our plant in Ohio, making Legacy the only U.S. source in our industry for the high-quality rubber extrusions so critical to door sealing performance.

Custom orders are our special strength. We are uniquely equipped to respond promptly to specific architect or owner requirements and provide documented design solutions for your approval. Our turnaround on customized Legacy solutions is setting new standards for

the industry depending on those requirements, specification to shipment can take as little as two days.

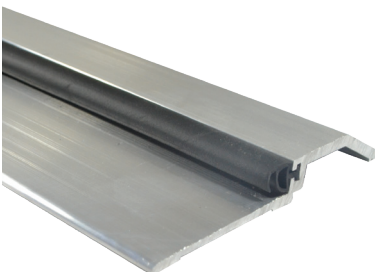
Our capabilities and commitment also provide unique value to our OEM partners. Legacy engineers can assist you in developing proprietary OEM programs for integrated product design and independent laboratory testing. In addition to configuring sealing systems, including intumescent and high-performance acoustical applications, we are able to manufacture rubber formulations to customer specifications, or developed collaboratively.

Legacy's comprehensive offering of parts and integrated systems shown in this catalog reflects a long tradition of expertise and responsiveness in problem-solving for the door and hardware industry. Above all, we place a premium on providing the expert support you expect and need. From answering basic product and installation questions to the most complex customization requirements, our friendly, highly-trained customer service team is standing by and ready to help.

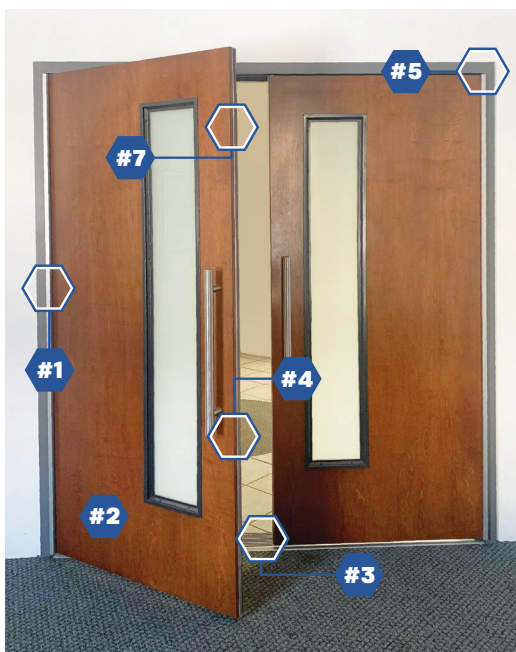
LEGACY'S Product Code

The **first number** of each product code identifies where the product is **installed** in the opening. Other components of our product codes are explained in the How To Order sections of this catalog.

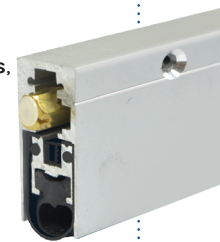
EXAMPLE - #3465MA is a threshold mounted to the floor.



#3465MA



- #1 Products mounted to the **door and frame**, such as hinges and finger protection.
- #2 Products that do not have a specific mounting location, such as acoustical sheets.
- #3 Products mounted to the **floor**, such as thresholds and saddles.
- #4 **Sub-components** or **sub-assemblies**, such as replacement rubber parts.
- #5 Products attached to a **frame**, such as perimeter gasketing.
- #6 Specifiable **sealing systems and configurations**.
- #7 Products attached to a **door**, such as automatic door bottoms, sweeps and astragals.



#7763CA