

How To Order: Automatic Door Bottoms

Example #7463CA-FX-36

Easy Ways To Order
Email

Orders@LegacyLLC.com

Phone

 Local: +1 (718) 292-5333
 Toll Free: +1 (888) 383-3330

PART NUMBER & FINISH - OPTIONS - LENGTH (IN)
7463
CA
FX
36
PART NUMBER

7023	7563	End Caps
7053	7593	749EC
7063	7663	4023EC
7093	7763	4063EC
7123	7793	4123EC
7153	7863	4153EC
7163	7963	4163EC
7253	71553	
7263	72553	Misc.
7323		2INCHNUT
7463		545DP
7553		

FINISH

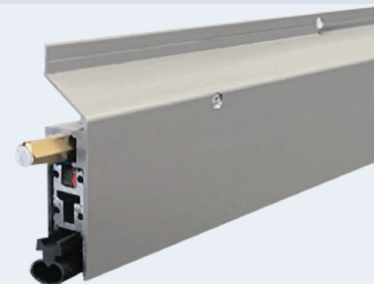
Finishes vary by product. Please check available finishes listed for each product.

- CA** - Clear Anodized
- MA** - Mill Aluminum
- BK** - Black Anodized Aluminum
- DB** - Dark Bronze Anodized Aluminum
- GD** - Gold Anodized Aluminum
- WP** - White Powder Coat

OPTIONS

Options vary by product. Please check available options listed for each product.

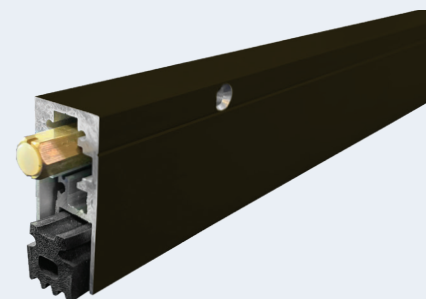
- | | | |
|---|---------------------------------|-----------------------------------|
| Blank - No Option | EP - Extended Plunger | LS - Light Spring |
| AIR - Air Flow | FL - Fire Label | PULL - Pull Out Out |
| BRW - Brillow | FX - Intumescent | PV - Pivot Doors |
| EA - Electrical Actuator | LIG - Ligature Resistant | SF - Security Fasteners |
| EMI/RFI - Electromagnetic / Radio Frequency Interference | LL - Lead Lined | SL - Sliding Doors |
| | | TD - Top Door Installation |

LENGTH
AVAILABLE SIZES - Can be manufactured to any length from 12" to 144".
 Please specify to nearest 1/16"


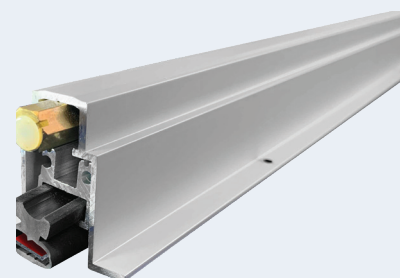
#7593CA-FX



#7763CA



#7163DB



#7463CA-FX



#7553MA

How To Order: Door Sweeps

EXAMPLE #7823CA-LIG-36

Easy Ways To Order
Email

Orders@LegacyLLC.com

Phone

Local: +1 (718) 292-5333

Toll Free: +1 (888) 383-3330

PART NUMBER & FINISH - OPTIONS - LENGTH
7823
CA
LIG
36
PART #

711	7552	78918
718	7583	79408N
725	7752	7W933
727	7774	
735	7823	
739	7835	
759	7836	
769	7852	
779	7891	
793	7923	
5241	7933	
7011	7936	
7111	7991	
7112	71518	
7115	71918	
7175	72918	
7178	73918	
7183	74453	
7283	74918	
7254	76453	
7351	77918	
7352	79418	
7451		
7452		

FINISH

Finishes vary by product. Please check available finishes listed for each product.

- CA** - Clear Anodized Aluminum
- MA** - Mill Aluminum
- BK** - Black Anodized Aluminum
- DB** - Dark Bronze Anodized Aluminum
- MB** - Matte Black Powder Coat
- WP** - White Powder Coat
- BR** - Architectural Bronze
- SS** - Stainless Steel

OPTIONS

Options vary by product. Please check available options listed for each product.

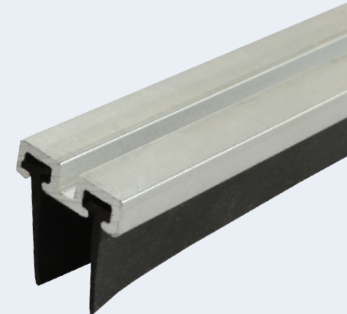
- Blank** - No Option
- AIR** - Air Flow
- FL** - Fire Label
- LIG** - Ligature Resistant
- NIT** - Nitrile Extrusion
- ORB** - Oil-Rubbed Bronze
- POL** - Polished Bronze
- PSA** - Pressure Sensitive Adhesive
- SF** - Security Fasteners

LENGTH

Please specify to nearest 1/16"



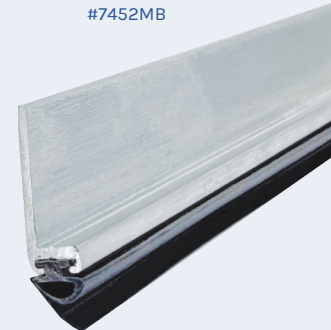
#7933SS



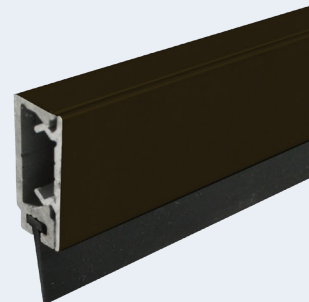
#7183MA



#7452MB



#799MA



#7774DB

How To Order: Thresholds

Example #30756BR-EPX-36-FA24

Easy Ways To Order

 Email
 Orders@LegacyLLC.com

 Phone
 Local: +1 (718) 292-5333
 Toll Free: +1 (888) 383-3330

#3376MA-RUB

PART NUMBER & **FINISH** - **OPTIONS** - **LENGTH** - **FASTENERS**
30756 **BR** - **EPX** - **36** - **FA24**

PART #

8FC	913C	3532	3905
9FC	928	3541	3912
8S5	928L	3545	3931
9S5	934C	3556	3960DP
S11	932L	3561	3961
S13	938F	3565	3962
S14	941	3571	3964
S16	942	3574	3966DP
T1	932L	3576	3976
T2	938F	3601	30145
T2E	3006EJ	3612	30176
T3	3031	3616	30756
T4	3106EJ	3632	31145
T5	3143	3641	31245
313	3144	3645	31256
342	3145	3656	34278
348N	3224N	3661	34761
352	3232	3665	35756
356	3276	3676	35761
386	3291	3701	
395	3292	3712	
398	3325	3741	
399N	3332	3745	
812AA	3376	3756	
813C	3425	3761	
813G	3432	3762	
824	3441	3776	
826	3445	3812	
828	3456	3841	
832	3461	3845	
832L	3465	3861	
838F	3476	3862	
841	3486	3865	
842	3501	3876	
865	3512	3882	
912AA	3514	3904	

FINISH

Finishes vary by product. Please check available finishes listed for each product.

- MA** - Mill Aluminum
- MB** - Matte Black Powder Coat
- BR** - Architectural Bronze
- SS** - Stainless Steel
- ST** - Steel

OPTIONS

Options vary by product. Please check available options listed for each product.

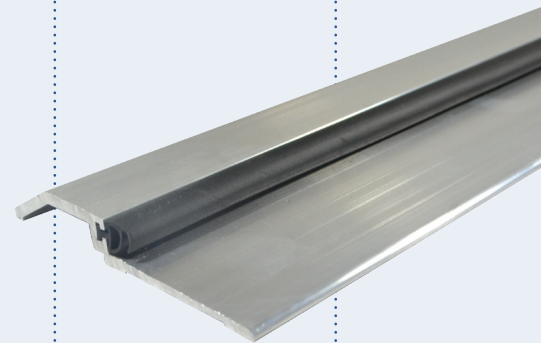
- Blank** - No Option
- ACF** - Aluminum Composite Filler
- EPX** - Epoxy Abrasive
- FL** - Fire Label
- LA** - Lead Anchors
- LIG** - Ligature Resistant
- ORB** - Oil-Rubbed Bronze
- PEPX** - Photoluminescent Epoxy Abrasive
- POL** - Polished Bronze
- RUB** - Rubber Grip

LENGTH

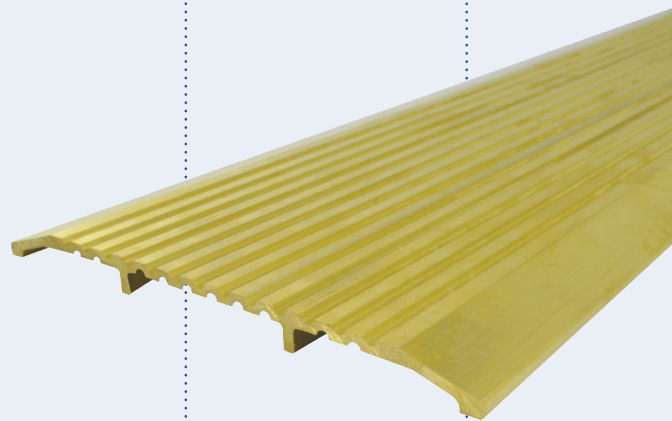
Please specify to nearest 1/16"

FASTENERS
Blank - Standard **Fastener Options** - FA21 - FA22 -FA 23 - FA24 - FA26 (see page 28 for details)

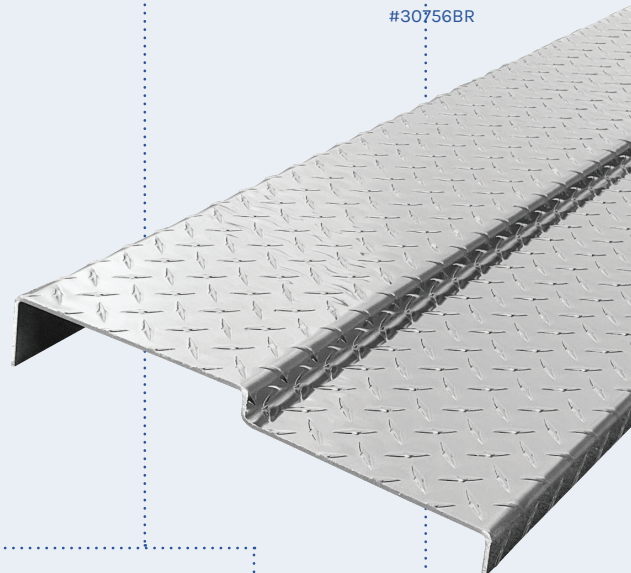
#3966DPSS



#3465MA



#30756BR



How To Order: **Self-Adhesive Gasketing**

Example #5881S-BK-PSA-17FT

Easy Ways To Order

Email
Orders@LegacyLLC.com

Phone
Local: +1 (718) 292-5333
Toll Free: +1 (888) 383-3330

PART NUMBER - **COLOR** - **OPTIONS** - **LENGTH (FT)**
5881S - **BK** - **PSA** - **17 FT**

PART NUMBER

- 1S 5814SPR
- 2S 5848S
- 3S 5881S
- 4S 5883S
- 5S 5884S
- 6S 7177S
- 7S 7277S
- 42PB 50517S
- 413PB 50518S
- 423PB 50519S
- 443PB 50778SPR
- 5018SPR 50878SPR
- 5088S 51888S
- 5118SPR 52408S
- 5213SPR 52718SPR
- 5218SPR 53408SPR
- 5258SPR 53508F
- 5428S 54418S
- 5628SPR 55418S
- 5658S 56128S
- 5711S 77128S
- 5813SPR

COLOR

Materials standard as noted for each part. Please check available colors listed for each product.

- BK** - Black
- BW** - Brown
- CL** - Clear
- GY** - Grey
- WH** - White

OPTIONS

Options vary by product. Please check available options listed for each product.

- Blank** - No Option
- FX** - Intumescent
- LIG** - Ligature Resistant
- PSA** - Pressure Sensitive Adhesive

LENGTH

Please specify to nearest 12"



How To Order: **Perimeter Seals**

Example #5077CA-FX-36

Easy Ways To Order

Email

Orders@LegacyLLC.com

Phone

Local: +1 (718) 292-5333
Toll Free: +1 (888) 383-3330

PART NUMBER & FINISH - OPTIONS - LENGTH

5077

CA

FX

36

PART #

- 501 5552
- 513 5574
- 523 5583
- 589 5584
- 599 5623
- 5001 5823SPB
- 5041 5823
- 5071 5873
- 5072 5874
- 5074 5903
- 5075 5924
- 5077SPB 5924L-EXT
- 5077 5974
- 5078SPB 50777
- 5078 51888
- 5175 52888
- 5178 53038
- 5203-FX 59150
- 5217
- 5272
- 5274
- 5413

FINISH / MATERIAL

Perimeter seals are available in Aluminum and Steel in various options. Please check available finishes listed for each product.

- CA** - Clear Anodized Aluminum
- MA** - Mill Aluminum
- BK** - Black Anodized Aluminum
- DB** - Dark Bronze Anodized Aluminum
- MB** - Matte Black Powder Coat
- WP** - White Powder Coat
- BR** - Architectural Bronze
- SP** - Grey Steel Prime
- SS** - Stainless Steel

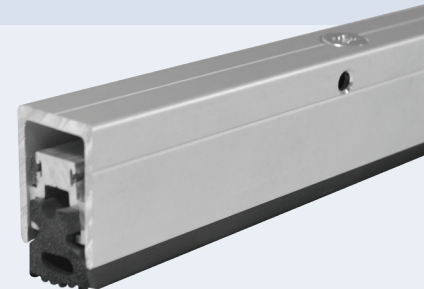
OPTIONS

Options vary by product. Please check available options listed for each product.

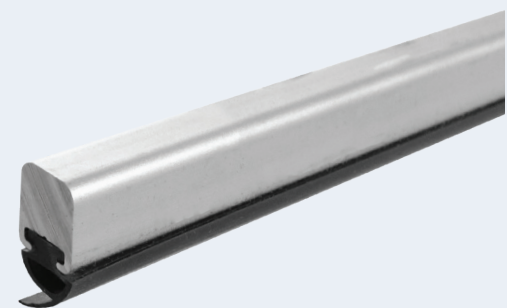
- Blank** - No Option
- EMI/RFI** - Electromagnetic/Radio Frequency Interference
- FL** - Fire Label
- FOAM** - Foam Insert
- FX** - Intumescent
- LIG** - Ligature Resistant
- PB-BK** - Black Pile Brush
- PB-GY** - Grey Pile Brush
- POL** - Polished Bronze
- PSA** - Pressure Sensitive Adhesive
- RS** - Access Control Ribbon Switch
- S-WH** - White Silicone
- SF** - Security Fasteners

LENGTH

Please specify to nearest 1/16"



#5071CA



#513CA



#5874CA



#589MA

How To Order: Meeting Stiles / Astragals

Example #7383CA-84-TX

**Easy Ways
To Order**
Email
 Orders@LegacyLLC.com

Phone
 Local: +1 (718) 292-5333
 Toll Free: +1 (888) 383-3330

PART NUMBER & FINISH - LENGTH - OPTIONS

7383 CA - 84 -

PART #
**BOTH DOORS
ACTIVE**

 413PB
 789
 799
 7001
 7075
 7078
 7178
 7275
 7378
 7552
 7574
 7583
 7623
 7823
 7974
 72918
 73918
 74918

ONE ACTIVE DOOR

 714 7483
 715 7531
 733 7631
 734 7731
 735 7831
 743 7933
 744 70481
 763 77128S
 774 77319

**NOTES: Both
Doors Active:**
 Order quantity
 must be 2, one
 for each leaf of
 the opening.

FINISH

 Finishes vary by product. Please check
 available finishes listed for each product.

CA - Clear Anodized Aluminum
MA - Mill Aluminum
DB - Dark Bronze Anodized Aluminum
BK - Black Anodized Aluminum
MB - Matte Black Powder Coat
WP - White Powder Coat
SP - Steel Prime
SS - Stainless Steel

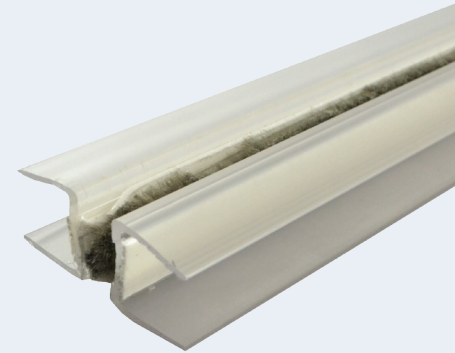
LENGTH

Please specify to nearest 1/16"

OPTIONS

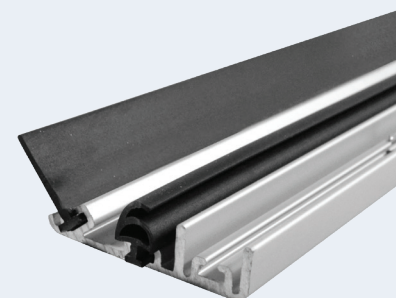
Options vary by product. Please check available options listed for each product.

Blank - No Option	NH - No Holes	SF - Security Fasteners
FL - Fire Label	POL - Polished Bronze	SLC - Strike Lip Cut
LIG - Ligature Resistant	PSA - Pressure Sensitive Adhesive	S-WH - White Silicone
		TX - Torx Security Screws


 #7531
 #7731

 PAIR OF
 #74918CA


#735MA



#7383CA

How To Order: Hinges

Example #1019CA-HD-84

 Easy Ways To
 Order

Email
 Orders@LegacyLLC.com

Phone
 Local: +1 (718) 292-5333
 Toll Free: +1 (888) 383-3330

PART NUMBER **& FINISH** - **OPTIONS** - **LENGTH**

1019 **CA** - **HD** - **84**



#1019CA

PART #

 115 1059
 117 1559
 517LPT 10059
 1019
 1026
 1027

FINISH

Finishes vary by product. Please check available finishes listed for each product.

CA - Clear Anodized Aluminum
MA - Mill Aluminum
DB - Dark Bronze Anodized Aluminum
WP - White Powder Coat
SS - Stainless Steel

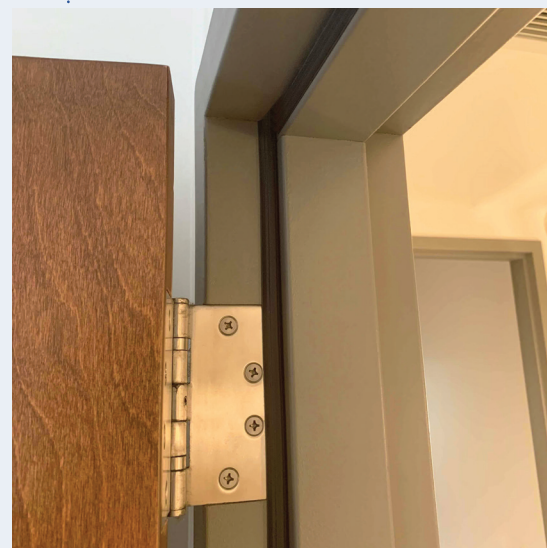
OPTIONS

Options vary by product. Please check available options listed for each product.

Blank - No Option **HD** - Heavy Duty **RH** - Right-Handed
CE - Concealed Electric **HT** - Hospital Tip **SF** - Security Fasteners
EPT - Electrical Power Transfer **LH** - Left-Handed **ST** - School Tip

LENGTH

For #1019: Please specify to nearest 1/16". For all Cam Lift and # 1027, Specify each (EA).



APPLICATION

How To Order: **Accurate Weatherstripping**

Example #3CHBR-84

Easy Ways To Order

Email
 Orders@LegacyLLC.com

Phone
 Local: +1 (718) 292-5333
 Toll Free: +1 (888) 383-3330

PART NUMBER & **FINISH** - **OPTIONS** - **LENGTH**
3CH **BR** - **PSA** - **84**

PART #	
1	8
2	8C
2C	21
2CH	B180
3	S180
3C	B181
3CH	S181
4C	B182
4CH	S182
5CH	416C
6	732
7	
7S	
7Z	

MATERIAL

Finishes vary by product. Please check available finishes listed for each product.

BR - Bronze
SS - Stainless Steel
ZN - Zinc
CU - Copper

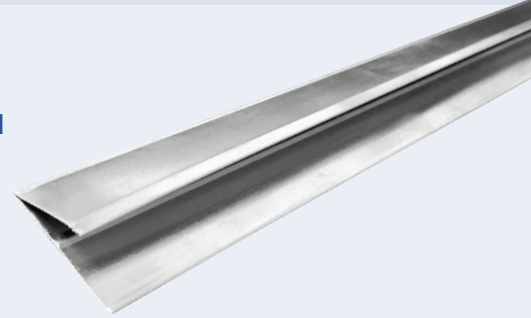
OPTIONS

Options vary by product. Please check available options listed for each product.

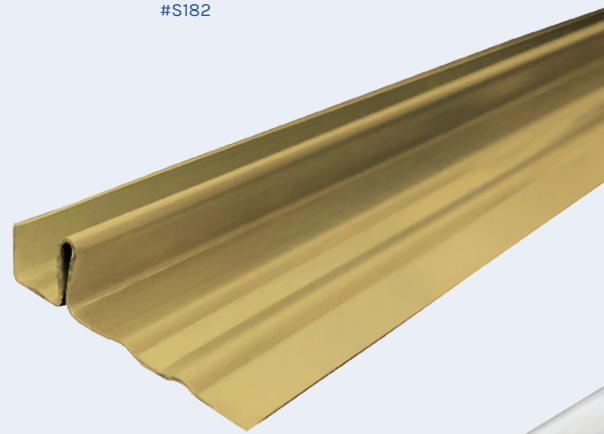
Blank - Standard Fasteners supplied
PSA - Pressure Sensitive Adhesive

LENGTH

Please specify to nearest 1/2"



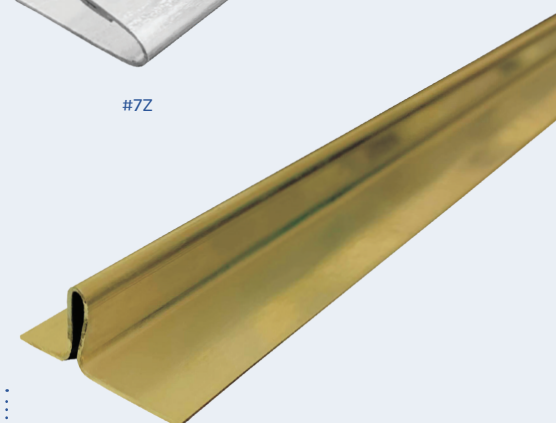
#S182



#3CHBR



#7Z



#1BR

How To Order: Flood Barriers

Example #5027MA-30X60

Easy Ways To Order

Email

Orders@LegacyLLC.com

Phone

Local: +1 (718) 292-5333
Toll Free: +1 (888) 383-3330

PART NUMBER & FINISH - HEIGHT - WIDTH
5027 MA - 30 - 60

PART #	2275	5127
	5021	5125
	5027	5128
	5028	5129
	5029	22070CH
	5121	22070-OS

FINISH
All Flood Shields are 5052 marine aluminum alloy. Finishes are available for mounting brackets only.
MA - Mill Aluminum

HEIGHT
Flood barrier panels can be built to any custom height, subject only to practical constraints on the ease of fitting into and removing from mounting brackets. Specify to nearest 1". Panels specified for stacking are supplied with connecting aluminum Bar Clamps.

WIDTH
Flood barriers can be built to any custom width or span. Specify to nearest 1/8". Interlocking posts with ground support are required and supplied for every 48" of installed flood barrier. Tableau ±1/8"

Ordering Note
Because of the range of available options and the precision needed for efficient installations, Flood Barriers are typically specified in consultation with our Engineering Department.

Call our engineering department to discuss.

LEGACY ENGINEERING
Local: +1 (718) 292-5333
Toll Free: +1 (888) 383-3330



Acoustical Composite Sheet (ACS)

Acoustical Composite Sheet (ACS) is proprietary, special-purpose rubber material manufactured in sheet form – developed primarily for sound door OEM use as acoustical core to improve STC ratings. This lead-free, densely filled polyurethane rubber effectively blocks sound transmission while minimizing sound vibrations in the door itself for superior STC performance, without the weight and cost of conventional solid-lead acoustical linings.

Call our engineering department to discuss possible applications for your sound door program.

LEGACY ENGINEERING

Local: +1 (718) 292-5333

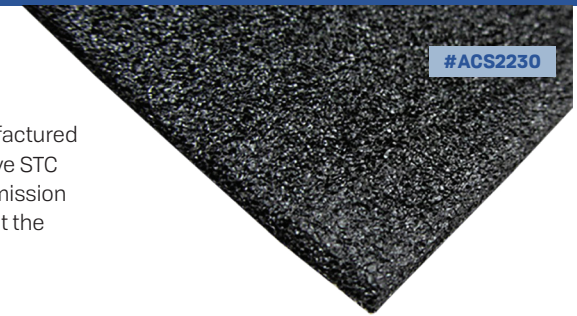
Toll Free: +1 (888) 383-3330

Its non-toxic, inert properties also make ACS suitable for a range of additional OEM applications, which we are available to discuss for possible collaboration.

MATERIALS / SPECIFICATIONS:

- Densely filled, solid pigmented, polyurethane rubber noise barrier providing both sound-absorbing and sound-deadening properties.
- Uses 100% natural fiber found in volcanic rocks.
- Non-toxic, inert and non-carcinogenic – no toxic reactions with air or water.
- Non-combustible and non-explosive with a high melting point and low smoke index – safe for use in most fire-rated applications.
- Biodegradable with a low carbon footprint.
- Frequently used in CLMD (constrained layer mass damping) applications, such as sound walls.
- Mold-resistant and mildew-resistant, and washable when used in exposed areas, such as restaurants, public spaces, temporary applications, hanging baffles, etc.

	¼" Thick	⅝" Thick
	#ACS250X12	#ACS125X12
STC Rating	28	24
Deficiencies	23	32
OITC Rating	24	19



Sound Transmission Coefficients

Frequency	STC - ¼"	STC - ⅝"
125 Hz	18 db	14 db
250 Hz	20 db	15 db
500 Hz	25 db	20 db
1000 Hz	28 db	23 db
2000 Hz	32 db	37 db
4000 Hz	37 db	33 db
Sound Transmission Class:	28	24

Physical Properties	#ACS250X12	#ACS125X12
Tensile Strength:	(Per ASTM D412-64) 375 lb./sq. in.	105.32 lb./sq. in.
Elongation:	(Per ASTM D412-64) 113.2%	160%
Tear Strength:	(Per ASTM D1004-66) 6.09 lb./in.	6.09 lb./in.
Weight/ft. ²:	1.337 lb./sq. ft.	0.7106 lb./sq. ft.
Thickness:	Approximately 0.250"	Approximately 0.125"
Cold Crack:	(32°F) No crack when bent over 1" mandrel	No crack when bent over 1" mandrel
Flammability:	Passes MVSS #302	Passes MVSS #302
	UL94-SE "O"	UL94-SE "O"
	Classified as SE (Self Extinguishing)	Classified as SE (Self Extinguishing)
	No burn rate	No burn rate
Recommended Service Temperature:	40°F - 140°F	40°F - 140°F
Notes:	May be doubled for improved isolation	May be doubled for improved isolation
	Resistant to oil, grease, & solvent	Resistant to oil, grease, & solvent

These results apply only to our test sample. Legacy will assist in developing samples and protocols for testing other materials on request.

Fire Protection Material for Special Order and OEM Applications

NOTES:

- Used in fire applications.
- Available in custom length, width and thickness.
- Proprietary formulation -- environmentally safe, minimal carbon footprint.
- Standard black color. Red available as option—specify RD.
- Optional - Laminated to wood, aluminum, steel, or other solid materials.



CUSTOM
MADE TO
ORDER ANY
LENGTH AND
COLOR

Call our Engineering Department to discuss your needs and available options.

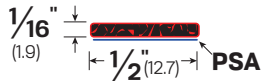
LEGACY ENGINEERING

Local: +1 (718) 292-5333 Toll Free: +1 (888) 383-3330

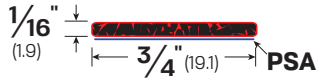
LEGACY	14212	14219	14225	14244	14312	14319	14325	24625	24650
ZERO	4062500	4062750	40621000	40621750	412500	4125750	41251000	42501000	-

Type #3 (30X Expansion)

#13212



#13219



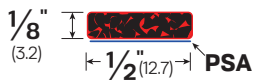
#13225



#13244



#13312



NO
COMPETITOR
EQUIVALENTS

#13319

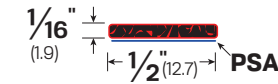


#13325

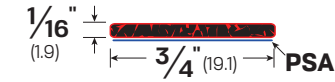


Type #4 (120X Expansion)

#14212



#14219



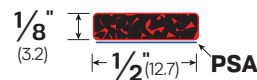
#14225



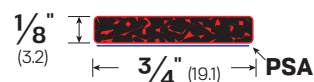
#14244



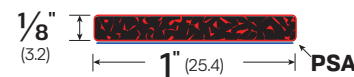
#14312



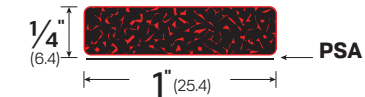
#14319



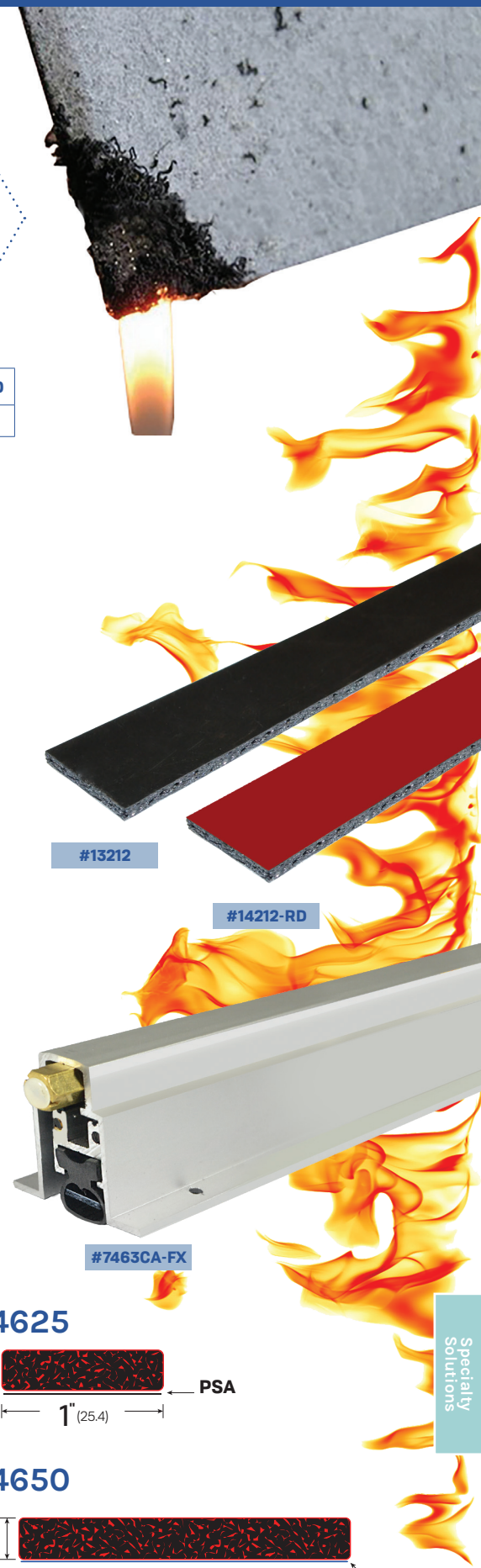
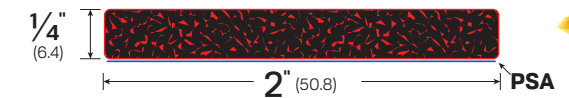
#14325



#24625



#24650



Specialty
Solutions



Website
RubberLLC.com

Address
415 Concord AVE,
Bronx, NY 10455

Email
Contact@LegacyLLC.com

Phone
Local: +1 (718) 292-5333
Toll Free: +1 (888) 383-3330

Legacy Rubber is your one source for top-quality rubber extrusions in the shapes, colors, and lengths you need. We can help determine the best rubber or evaluate custom compounds for your application.

Legacy Rubber is located in the heart of the nation's primary rubber manufacturing region, Middlefield, Ohio. We produce highest-quality materials in both standard and customized formulations, and can supply virtually any kind of rubber, tinted to the color you need.

Available in both dense and sponge compounds, standard materials include: EPDM · natural rubber · nitrile · polyisoprene · SBR · silicone · neoprene.

Legacy rubber products are solving problems across a broad spectrum of industries, including:

- Agriculture
- Equipment
- Marine
- Automotive
- Food
- Pharmaceutical
- Aviation
- HVAC
- Renewable Energy
- Construction
- Industrial
- Window & Door



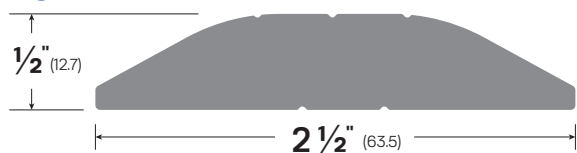
The machine line in our Middlefield, Ohio Facility.



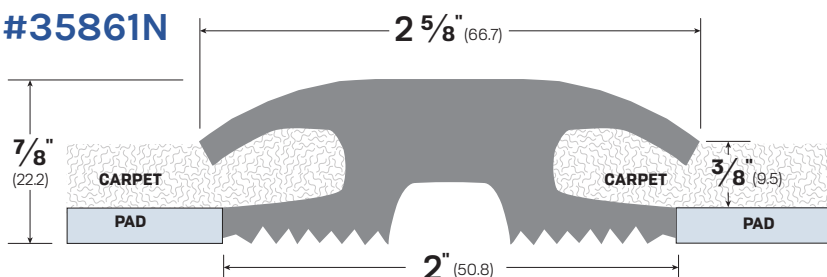
UNIQUE BENEFITS FOR OUR OEM PARTNERS

- Our state-of-the-art equipment includes digital controls that maintain very close tolerances for optimizing conformance of custom-made dies to their blueprints, along with providing consistent, accurate extrusions.
- Extrusion capabilities include: standard and custom shapes and profiles, seals, weatherstripping and rubber straps.
- Our continuous cure technology permits long-run extrusions of virtually any length—for example, O-rings in continuous stock to lengths of 1,000 feet and longer.
- 100% U.S. sourcing eliminates the variables of international supply and deliveries. On-time delivery is standard at Legacy Rubber.

#3224N



#35861N



MATERIAL: N - Neoprene

SBR: Styrene-butadiene Rubber

A synthetic rubber with good abrasion resistance and aging stability. Car tires are made of SBR.



#35861N

LEGACY	NGP	PEMKO	ZERO
3224N	-	-	-
35861N	401	-	1685N

Specialty Solutions