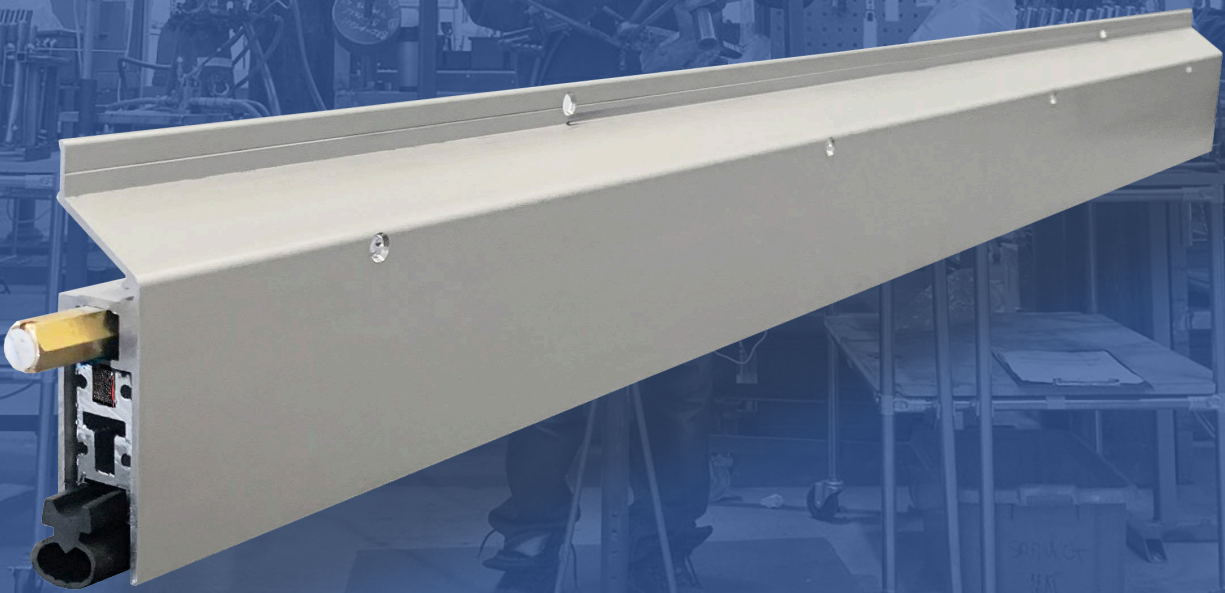




LEGACY
MANUFACTURING

Intumescent Extended-Drop Automatic Door Bottom

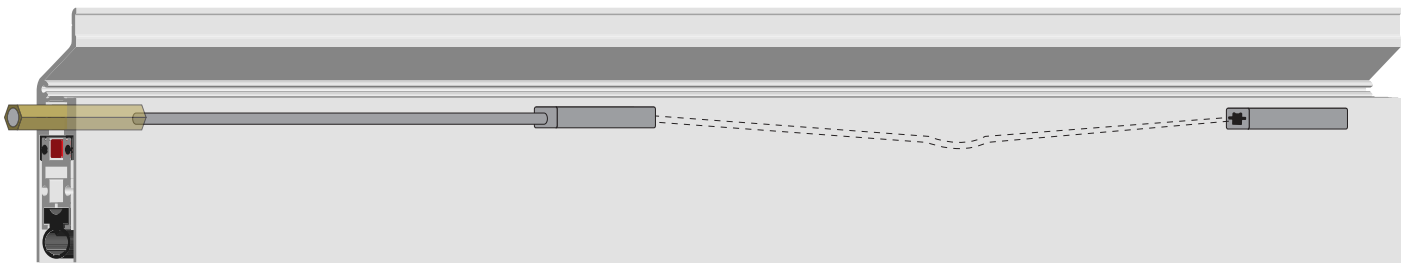


#7593-FX

Automatic Door Bottoms (ADB)

Legacy automatic door bottoms (ADB) are designed and built using proprietary rubber and highest-quality housings for superior performance and durability, even under the most challenging installed conditions. The proof is in our exhaustive cycle testing in the lab. And the best measure of performance over many years in the field is the sound of silence from satisfied customers.

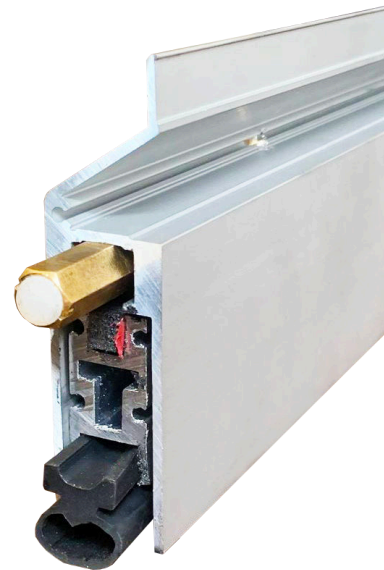
Legacy's ADB product line is unsurpassed in the industry for scope and versatility. Used primarily for blocking air, noise, smoke and fire, Legacy ADBs are also available for specialized applications, such as electrical actuation, X-ray protection or allowing free air flow. Additional options help specifiers optimize the utility of our models for specific applications, and we offer a wide range of anodized and powder-coated finishes. Recent enhancements provide simplified interior design for better service life and maintenance.



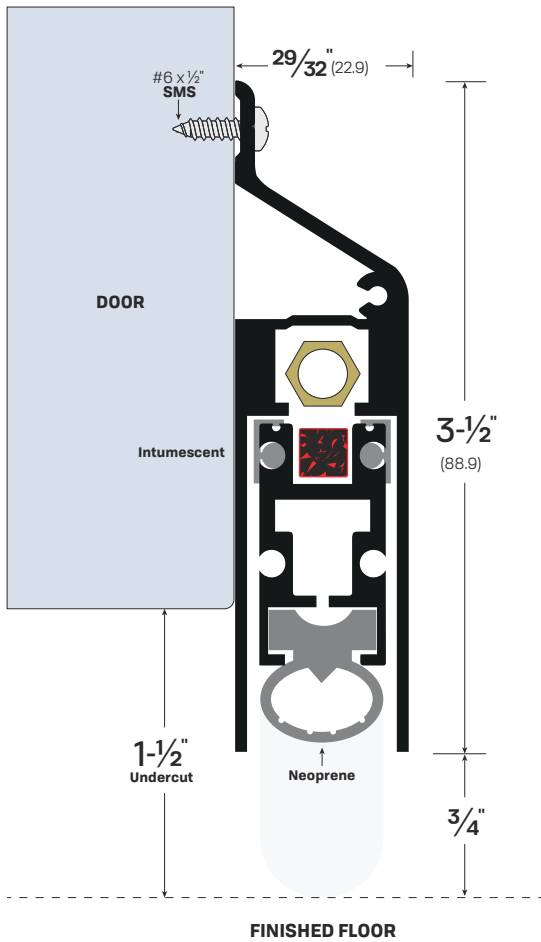
Patent-pending technology

The technology for reliable performance is the same for all standard Legacy ADBs. The rubber seal along the bottom of the unit is concealed when the door is open. As the door closes, compression of a plunger against the door frame activates a flat spring mechanism that controls the drop of the seal. Operating from the hinge

side to eliminate drag and resistance, the gasket drops down smoothly in a scissor-like motion creating an uninterrupted seal along the floor. This self-leveling operation ensures a tight seal even on uneven surfaces. An adjustable brass hex nut attached to the plunger provides additional control to satisfy field conditions.



#7593-FX



The Extended-Drop

Developed in response to specific user requirements, our new extended drop automatic door bottom solves two common problems. Its integrated design features a unique sloped top casing designed to slough off rain water and prevent pooling on top of the ADB housing in exterior applications. It simplifies installation by eliminating the need for adding a separate rain drip part to the door bottom.

Providing up to a 1.5 inch drop, deeper than typical ADBs, this unit is also designed to help compensate for drop differentials found in door installations with large gradients or slope conditions on one side of the door. The deep drop can also be useful for exterior installations where floor surfaces may be degraded by weather exposure. The deeper drop allows smooth door function in spite these conditions, which can otherwise cause door bottoms to drag and stick.

Intumescent Option

Legacy's intumescent material expands rapidly when exposed to heat or high temperatures. This stops fire expansion through the gaps around doors. When the intumescent material is used in conjunction with the #7593-FX door bottom, it creates a forceful expansion within the center of the door bottom resulting in the activation of the sealing mechanism. This pushes the rubber down and creates a seal.

Product Specifications

Finishes	CA - Clear Anodized Aluminum MB - Matte Black Powder Coat WP - White Powder Coat
Options	FX - Intumescent SF - Security Fasteners
Sizes	Can be manufactured to any length from 12" to 96"
Notes	<ul style="list-style-type: none"> For use on doors with an excessive undercut or uneven floor. Adjusting the brass nut changes pressure on concealed internal spring to satisfy field conditions. Self-leveling door seal up to maximum 1-1/2" drop. Unit supplied with 1 pair of end caps - Part #4093EC-CA or #4093EC-MB